

National Forest  
Foundation

# ANNUAL REPORT

---

2019



# TO OUR FRIENDS & SUPPORTERS

---

**W**hen Gifford Pinchot became the first Chief of the new U.S. Forest Service in 1905, he led a period of amazing growth and change for how our country viewed and managed public lands.

Today's National Forest System is vastly different from those early days, but we find ourselves again in a period of important growth and change.

With climate change, rising threat from wildfire, and growing recreational interest in National Forest lands and waters, the NFF is expanding its impact and reach. In this Annual Report, we invite you to explore how we are completing more on-the-ground work across key conservation projects than ever before, and how we are planting, literally, millions of trees each year with the Forest Service and our key partners who invest with us.

Even as we expand our staff and programs, we are adapting our approaches. The NFF is piloting conservation finance techniques, and we are strengthening a program of Fellows who support our growing collaboration practice. We have transformed our marketing and communications efforts to engage millions of Americans in what are truly their National Forests.

We invite you to join us on a brief journey through these pages. Then join us by staying connected and supporting this vital work. You have an important place in the growth and change that will ensure our beloved National Forests are healthy and welcoming for the next century. Thank you for your interest and support!

Sincerely,



Mary Mitsos  
NFF President & CEO



Patricia Hayling Price  
NFF Board Chair

---

“We work on behalf of the American public to inspire personal and meaningful connections to our National Forests, the centerpiece of America's public lands. We believe these lands, and all they offer, are an American treasure and are vital to the health of our communities.”

# FEATURED PROJECT



Partners we worked with:

- Alaska Trails
- Alaska Geographic
- Chatham School District
- Sitka Conservation Society
- Backcountry Builders, LLC
- MobilizeGreen



4 Cabins restored

41

Youth engaged



9.15 Miles of trail restored/maintained

155

Volunteers engaged

29

Miles of shoreline cleared of marine debris

“...we are working to both build capacity for Alaska communities and nonprofits and accomplish much-needed work to improve recreation assets and forest health.”

# ALASKA FOREST FUND



Alaska has more than 20 million acres of National Forests, between the Tongass and Chugach, the two largest National Forests in the system respectively. These National Forests contribute greatly to the quality of life of Alaskans, and also deliver unparalleled outdoor experiences to tourists, contributing crucial income to the state economy. But the growing demand of outdoor recreation and tourism has outpaced the ability of the Forest Service to keep up with much-needed maintenance and enhancements to recreation infrastructure.

To help address this problem, we partnered with the Forest Service to create the Alaska Forest Fund and leverage private investment with federal funding. Through the Fund, we are working to both build capacity for Alaska communities and nonprofits and accomplish much-needed work to improve recreation assets and forest health.

For the fifth year we supported conservation work by the Angoon Youth Corps in Admiralty Island National Monument and the Kootznoowoo Wilderness. This six-person Alaskan Native youth corps accomplished trail maintenance, campsite restoration, invasive species removal and beach clean-up work, all while learning leadership and professional skills.

The Iditarod National Historic Trail spans over 2,300 miles between Seward and Nome. We are working on a multi-year project to improve a 180-mile stretch on the Chugach National Forest between Seward and Girdwood. We supported three volunteer events that helped with trail maintenance to improve tread and clear brush. We also supported a youth conservation corps of seven youth and two leaders who conducted nine days of trail improvements.

On the Chugach National Forest, we supported a six-person Alaska Geographic youth crew to conduct a campground restoration and beach clean-up project on Prince William Sound, near Whittier.

The shelter that public-use cabins on Alaska's National Forests offer is an important element for residents and tourists alike to be able to enjoy outdoor recreation activities. We accomplished restoration work on four well-used cabins on the two Forests. On the Chugach, we improved the Aspen Flats and Paulson Bay cabins. On the Tongass we upgraded the Fred's Creek and Allan Point cabins.



Aspen Flats before restoration



Aspen Flats after restoration

# 5B RESTORATION COALITION

**T**hrough our Conservation Connect program, we connect local communities to their National Forests. We bring people together to develop innovative solutions around the management of public lands. In the Northern Rockies, we convene and facilitate a number of local collaboratives, one of which is the 5B Restoration Coalition out of Wood River Valley on the Sawtooth National Forest.

From public and private land managers to a variety of trail users, this collaborative represents broad interests working together to share ideas and find solutions that result in healthy forests, wildlife, rivers and wildlands. Originally formed in 2015, the group has worked to develop shared priorities, build stronger private-public partnerships, leverage funding, and encourage community stewardship for sustainable outcomes.

This past year, the groups sights have been set on Bald Mountain (locally know as Baldy) which includes the area's iconic ski resort, Sun Valley. The forests on Baldy are dying at an alarming rate from insects and disease. This presents a number of potential risks to the values the community holds dear including local scenery, the economy, recreation, wildlife, and fire resilience and preparedness.

Local agencies and the ski resort have been working together for decades to maintain the health of Baldy but the rate at which the damage is being done is outstripping the efforts. The coalition has taken on this challenge and become a catalyst for the development of a new proposal to address this growing problem at a much larger scale.

While still in the planning phases, the Bald Mountain Stewardship Project will strive to improve forest health, reduce fire risk, and improve recreation on and around the mountain. The coalition is helping to connect the dots in the community for the importance of this work, and brining new voices and ideas to this discussion that will be integral for the long term success of such an ambitious project.



“We bring people together to develop innovative solutions around the management of public lands.”

## FEATURED PROJECT



Partners we worked with:

- Environmental Resource Center
- Northwest Youth Corps
- Blaine County
- City of Ketchum
- City of Sun Valley
- B.L.M.
- U.S. Forest Service
- Sawtooth Botanical Gardens
- Idaho Conservation League
- The Nature Conservancy
- Sun Valley Economic Development
- The Elephants Perch
- Sun Valley Ski Education Foundation
- The Keystone Concept
- Ecosystem Sciences and Ecosystem Sciences Foundation
- Blaine County Recreation District
- Sun Valley Company
- Salmon Valley Stewardship
- Western Aspen Alliance
- The Community School City of Hailey

25+

Active coalition members

200+

Volunteers engaged



# FEATURED PROJECT



Partners we worked with:

- Colorado Fourteeners Initiative
- Colorado Mountain Club
- Friends of the Dillon Ranger District
- Friends of the Peak
- Get Outdoors Leadville!
- Mile High Youth Corps
- Rocky Mountain Field Institute
- Rocky Mountain Youth Corps
- Southwest Conservation Corps
- U.S. Forest Service
- Volunteers for Outdoor Colorado
- Wildland Restoration Volunteers

## 4,881

Linear feet of trail constructed (in some of the most complex terrain in the country)

## 226

Youth engaged

## 10.1

Miles of trail maintained



## 17,339

Volunteer hours

Peaks worked on:



- Mount Elbert
- Pikes Peak
- Uncompahgre Peak
- Wetterhorn Peak
- Kit Carson Peak/ Challenger Ridge
- Grays Peak
- Torreys Peak

# FIND YOUR FOURTEENER



Colorado is home to 54 14,000-foot-peaks, aptly called “fourteeners” by Coloradans, and 48 of these beloved peaks reside on our National Forests. Colorado’s Fourteeners and their alpine habitat are home to rare plant communities, ancient soils, and headwaters that businesses and residents depend on for water supply.

Fourteeners also provide outstanding recreational experiences for locals and visitors alike. Unfortunately the rising visitation is taking a toll. More than 300,000 people hike a fourteener annually and that number is growing.

A holistic solution to this growing challenge necessarily includes management approaches, education, resource management, and a key element—sustainable trails. Sustainable trails are essential to protect Colorado’s alpine ecosystem while providing hikers with a durably constructed, safe trail.

However, many fourteeners do not have sustainable trails. Fourteener “routes” were established long ago as early explorers followed the path of least resistance to the summit. These early explorers never dreamed that one day thousands of hikers would attempt to summit the same routes on a single Saturday, literally loving the mountains to death.

As visitor use increases, so too does the need to take action to preserve Colorado’s majestic fourteeners and the experiences they provide. As the needs mount, only a strategic, collaborative effort among multiple trail stewardship organizations will help make incremental headway.

We completed our third year of a collaborative stewardship approach with the Forest Service and organizations across Colorado for the Find Your Fourteener campaign.

The Find Your Fourteener campaign is creating a new model of collaborative stewardship to develop proactive and forward-thinking solutions for our fourteeners. The dedicated campaign partners have identified “pinch points” that are inhibiting trail maintenance and ecosystem restoration and are finding creative ways to get more work done each short field season. Together we’re piloting new approaches and expanding our reach to move past “business as usual.”

# PLANTING TREES ON THE CHEQUAMEGON-NICOLET NATIONAL FOREST

**T**ucked in the northwoods of Wisconsin, Chequamegon-Nicolet National Forest is home to dozens of lakes, streams and rivers, offering a bountiful landscape to both visitors and wildlife. The forest's Spider Lake area features diverse vegetation, layered amid swamp hardwoods, and hosts a variety of birds and other wildlife. The area is an established Research Natural Area and houses the origins of two important tributaries, the Chippewa and Marengo Rivers.

Many of the trees we plant through our 50 Million For Our Forests campaign support wildfire recovery, especially in the West, but in the Great Lakes region, there is often another reason: extreme weather events.

In the summer of 2016, a severe storm caused flash flooding followed by strong winds, affecting more than 3,000 acres of Chequamegon-Nicolet National Forest, including the Spider Lake region. Much of the storm damage occurred in oak and aspen stands, species that can naturally regenerate. However, other species will not return without our help. To hasten forest recovery and re-establish historical stand diversity, we planted more than 170,000 red pine seedlings across nearly 250 acres in 2018 and 2019.

This project offers an example of the expertise and science-based approach to tree planting that our partners at the Forest Service use on all reforestation projects. When evaluating sites for potential plantings, agency silviculturists carefully consider natural regeneration and non-action in combination with active tree planting for overall forest health.



Wind damage on the Chequamegon-Nicolet National Forest



## 50M For Our Forests Campaign

Results to Date:

**7,600,000**  
Trees planted



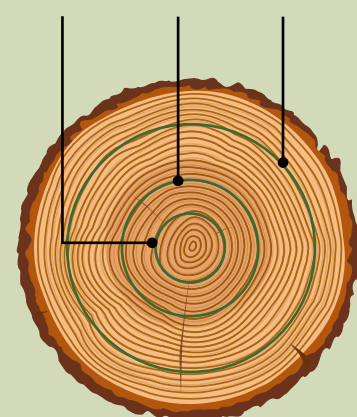
**44**  
Number of tree species planted

**39**  
Forests where we planted trees



Like the rings in a tree, we grow each year:

2017	2018	2019
1.8 M	2.6 M	5 M
Trees	Trees	Trees



## FEATURED PROJECT



Partners we worked with:

- U.S. Forest Service
- North Lawndale College Prep High School



16

Youth engaged

3,673

Plugs planted

20

Tracts monitored with robel pole equaling a distance of 16.2 miles



.45

Miles of trail cleared or resurfaced

“These nature-based outdoor experiences promote mental and physical health, strengthen communities, build connections to the land, and, ultimately, nurture the next generation of land stewards.”

# MIDWIN YOUTH CORPS



Just an hour south of Chicago and a world away from Michigan Avenue, Midwin National Tallgrass Prairie offers a breath of fresh air and open space. This 20,000-acre landscape is a restoration work in progress as the NFF, Forest Service and partners work to restore a native tallgrass prairie on what was the site of a massive munitions factory only 50 years ago.

For the eighth consecutive year, the NFF hired 16 students to participate in the Midwin Youth Corps for an eight-week job program that both restores the landscape and introduces the students to the natural world and their public lands. The program, done in partnership with North Lawndale College Prep High School and the Forest Service, provides teens from Chicago's West Side neighborhoods an opportunity to learn job skills and be exposed to careers in conservation.

The 16 students this summer assisted in meaningful restoration activities such as planting native plants, tall grass monitoring and removing invasive plants. They also spent time removing brush and resurfacing trails to ensure visitors can continue to have access to and enjoy Midwin's landscape.

These nature-based outdoor experiences promote mental and physical health, strengthen communities, build connections to the land, and, ultimately, nurture the next generation of land stewards.





# TAHOE NATIONAL FOREST



**T**he Tahoe National Forest stretches from the northern Sierra Nevada across the Sierra crest to the California-Nevada state line. A century of fire suppression has led to uncharacteristically dense forests—which when compounded with multi-year droughts and increasing average temperatures can exacerbate the risk of catastrophic wildfire.

In an effort to reduce the risk of high-severity wildfire while simultaneously improving forest health, we have partnered with the Forest Service and implemented over 600 acres of forest health projects on the Tahoe National Forest this year.

At Sagehen Creek Field Station and Experimental Forest, we completed prescribed fire projects. We also broke ground on the Big Jack East project, a community protection project near the town of Truckee.

Throughout the Forest, we completed restoration of various meadows. When restored, these meadows act like huge sponges that soak up spring snowmelt and release water when it is most needed in the late summer. This helps provide healthy water flow conditions downstream.

We began work on the Yuba Project, one of the largest NFF projects to date, in the headwaters of the North Fork Yuba River. We also performed mechanical thinning as well as fire line construction to prep for next year's work.

In addition to the issues surrounding forest health, increased recreational use has generated unauthorized trail networks and degraded authorized trails. To encourage sustainable trail use on the Tahoe, we supported two trail projects this year. The A1 trail project improved user-created trails and built new trail. The project completes a trail loop system with a safer trailhead directly accessible from downtown Truckee.

We completed the Big Chief Trail in 2018 and celebrated with an official ribbon-cutting ceremony attended by the public this summer. The trail is a new 7.5-mile non-motorized trail that connects the southern tip of the Sawtooth Trail with the Tahoe Rim Trail.

Both projects provide sustainable and long-lasting recreation opportunities for the community, particularly for mountain biking, by reducing erosion from unauthorized trails and providing re-routes that avoid protected habitat for sensitive species.



Partners we worked with:

- Robinson Enterprises Inc.
- Frank Dial Logging Inc.
- Firestorm
- Summitt Forests Inc.
- Mountaineers Fire Inc.
- Woolery Timber Management
- Capitan Forestry Inc.
- Trinity River Lumber Co.
- Red Mountain Resources
- CrossCheck Services
- SCS Timber Resources
- Tahoe Truckee Community Foundation
- U.S. Forest Service
- Yuba Water Agency
- Blue Forest Conservation



**1,081**

Acres of fuels reduction completed

**6,827**

Acres of fuels reduction planned to be completed over the next two years

**84**

Acres of meadow restored

**15,610**

Tons of Biomass generated

**3.5**

Miles of trail constructed or maintained

**74**

Acres of aspen restored




# CONSERVATION RESULTS 2019



**194,725**  
volunteer hours

15,158 volunteers  
7,577 youth employed or engaged

**\$20,515,750**  
total conservation value



Collectively, the NFF issued 180 grants or contracts in FY 2019. Not included tree planting, we invested \$7,390,242 in federal and private funds, which were leveraged with \$13,125,508 in partner-raised funds for a total conservation value of \$20,515,750.

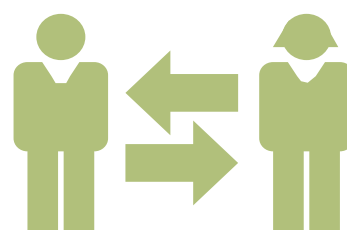
**67,132** acres of wildlife habitat restored or maintained



**125**  
miles of trailwork

**1,242**  
participants in peer learning sessions

10 peer learning sessions  
10 Conservation Connect Fellows



**159**  
miles of stream surveyed or restored

 **99,300** acres of fuel reduction planned or completed

**6,104** acres of noxious weeds treated

# PROGRAM WORK 2019



## STATEMENT OF ACTIVITIES

Year Ended September 30, 2019

### Support and Revenue

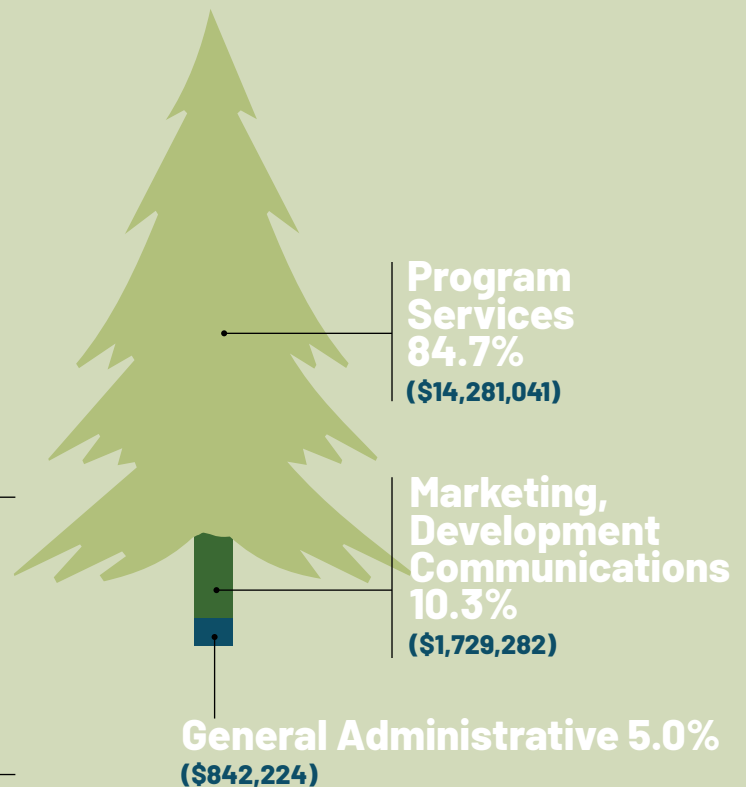
Foundations .....	\$2,466,502
Corporations .....	\$8,218,034
Individuals .....	\$1,031,165
In-Kind .....	\$262,265
US Government Grants .....	\$3,057,142
State and Local Government Grants .....	\$1,110,687
Special Events .....	\$235,725
Contracts and Reimbursable Grants .....	\$4,162,942
Other Income .....	\$30,364
Investment Gain (Loss) .....	\$2194,090

**Total Support and Revenue..... \$20,768,916**

### Expenses

Program Services .....	\$14,281,041
Marketing, Development and Communications .....	\$1,729,282
General and Administrative .....	\$842,224

**Total Expenses ..... \$16,852,547**



# DONORS Individuals and Organizations

## \$500,000 - \$999,999

Coconino County

## \$100,000 - \$499,999

Anonymous  
California Wildlife  
Conservation Board  
City of Phoenix

## \$50,000 - \$99,999

Christian Channell  
City of Scottsdale  
Craig R. &  
Barbara M. Barrett  
Paul & Sonia Jones  
Turnbull-Burnstein Family  
Charitable Fund

## \$25,000 - \$49,999

Gunnison County  
Mark & Susan Stutzman  
Utah Division of Wildlife  
Resources

## \$10,000 - \$24,999

Bob Wheeler  
Center for Large  
Landscape Conservation  
Chad & Ilona Oppenheim  
Forest Founders  
Gunnison County  
Metropolitan Recreation  
District  
Maya & Ramesh Dedhia  
Michael Johnson  
Narendra & Harsha Patel  
Peter Mensch  
Randall & Catherine  
Weisenburger  
Richard Himmelstein  
Sirius Fund  
Vail Valley Mountain Bike  
Association

## \$5,000 - \$9,999

Andrew Irving  
Barry Fingerhut  
Caroline Choi  
Clackamas County  
Tourism & Cultural Affairs  
Fredric & Beverly Reichel  
Jake Mincemoyer  
James & Maggie Hunt  
John Kramer  
John T. Coe  
Krista Miller  
Matt Payne  
Montana Department  
of Natural Resources  
& Conservation  
Severin Youso  
Tucson Electric  
W. Grant & Karen Gregory

## \$2,500 - \$4,999

Alex Pelan  
Allie Kline  
Carol Anderson  
Charles & Libby King  
Charles Purse  
David Ruf  
Elisabeth Hershey  
Ellen & David Bacon  
Eric Northup

Erik & Lori Davidson  
Going to the Sun Rally  
Janice E. Thompson  
Jay Desai  
Jeff Paro  
Jennifer & John Spait  
Kip & Judson Allardt  
Lynn Renee Persin  
Madison County  
Nimesh Bhupendra Shah  
Paul Hansen &  
Martha Heinze  
Peter Aresty  
Rouse Family Foundation  
Spencer Frasher  
Steve Bickford  
Steven Bragg  
Timothy P. &  
Susan Schieffelin

## \$1,000 - \$2,499

Abhimanyu Singh  
Agda, Bianca, &  
Luana Tamassia  
Allan Thom  
Amanda Milliron  
Amar Patel  
Andrew Emge  
Ariel Webster  
Austin Dickson  
Barbara Mcneal  
Barry J. Simon  
Brian & Laura Doehle  
Carol Wu & Terry Zink  
Caroline Michiko Kunitake  
Cathy Gesior  
Chad Weiss  
Charles Glass  
Charles Rotbart  
Cody Curran  
Coleman & Susan Burke  
Coline Elizabeth McConnel  
Cynthia Breunig  
David A. Johnson Donor  
Advised Fund  
David & Jennifer Evans  
David Sugalski  
David Weikersdorfer  
Douglas Bailey  
Dustin Mondell  
Evan Martin  
Greg Vital  
Hugh C. Wiley  
James Morris  
Jason Talbot  
Jason Weisser  
Jennifer Bowman  
Jennifer Braun &  
Raymond J. Ryan  
Jeremy Zelsnack  
Jill Sadowski  
Joel Mongeon  
John Henry Moulton  
John P. & Patricia Case  
John Raben  
Joshua A. Morgan  
Julia Laulis  
June Davidson  
Kartik Vittal  
Kate Heaton  
Kelly Rawlings  
Kevin & Nancy Cooper  
Larami MacKenzie  
Logan Rockmore &  
Lisa Weitekamp  
Lourdes Dominguez  
Maria Guyette  
Mark Rey  
Mary Mitsos  
Matt Conway  
Matthew Charles Barnett  
Michael Brown  
Michael DeNapoli  
Michael Haverkamp  
Michael McAllister  
Michael Scot Mason  
Mike & Darlinda Fleitz  
Minh Luu  
Mona Bushnell  
Morgan Gregory  
Mr. & Mrs. Hal Sider  
Murray & Jeanie Kilgour  
Nadezhda Osipova  
Natascha Born  
Nick Bindert  
Noah Price  
Oldman Starkweather  
Charitable Fund  
Patrick Alexander Murray  
Patrick Leo  
Preston Bruenn  
Randy James Peterson  
Randy Morey  
Ray & Diana Foote  
Reese Sexton  
Richard Ahearn  
Richard Alper &  
Kate Herrod  
Robert Doepker  
Robert Gootee  
Ryan Hassick  
Sabine Moeller &  
Peter Lusk  
Sally Myall  
Salvatore Scalisi  
Sandy Irving  
Sarah Sinha  
Shannon Soady  
Shirley Kuebrich  
Revocable Trust  
Simon/Meyers  
Sri Hari Vignesh  
Steven Engel  
Strong Tower Consulting  
Sumeet Pannu  
Susan E. Carmel  
Susan Fraker  
Susan Hairston  
Susan Talon-Mazer  
Thomas Langston  
Tony Seigh  
W. Grant Jr. & Kim Gregory

## \$500 - \$999

Adviser Lisa Fevola  
Alan Ahern  
Alexander &  
Brittany Lippert  
Allison Kimball  
Alyson Pytte  
Anthony Grande  
Antonio Rodriguez  
Arthur Vale  
Ashley Castelo  
Barbara J. Howell  
Becky Griffin

Betsy & Michael Vitton  
Bobbitt Noel  
Brett Ballbach  
Brian Mahoney  
Brittany Overbeck  
Brynn Keith  
Chad Berens  
Chelsea Peretti  
Chris Feustel  
Chris French  
Christiane Noll  
Christine Arden  
Claire Baker  
Cole Sosnoff  
Courtney Elias  
Daniel & Leah Frye  
Danielle Dale  
David Bradwell  
David E. McIntyre  
David Fizzell  
David S. Pierson  
David Sebastian  
David Shorr  
Debra L. Cagan  
Deena Nelson  
Dexter Filkins  
Dorothy Zablocki  
Douglas Raymond Fox  
& Roseanne Pajka  
Edwin Bernhard  
Ellen Kick  
Eric Carlton  
Eric Wickstrom  
Erik & Cate Wright  
Franklin & Betty Boroughs  
Galen Bodenhausen  
Gavin Williams  
Geoff Tock  
George Mulford  
Glenna & Judith  
Dowling/Schultz  
Harold Benjamin  
Heidi Allen  
Helen Vietor  
J. Christopher Doran  
Jaana Asriel  
Jack & Cathie Kozik  
Jacob Golding  
James Costabile  
Jan Levine  
Jeff Page & Bunny Loftus  
Jeffrey & Beatrice Lipper  
Jeffrey Hoops  
Jim & Ann McIlwain  
John Giordano  
John Olson  
Jonathan Baker  
Joseph D. Rotella  
Joshua Park  
Judith A. Greene  
Justin Haugh  
Justin Niebank  
Karen Howat  
Katherine Horn  
Kathryn Amyotte  
Katie's Tribe  
Keith Goodall  
Kevin Benner  
Kevin Chiang  
Kolette Brown  
Laura Slattery  
Lisa Bailey & Kevin Cassidy  
Maggie Kayne

Marcella Hastings  
Margarita Di Salvo  
Mark Adrian Garcia  
Martha Wicker  
Mason Boring  
Matthew Dell Orfano  
May Talebi  
Melanie Dodson &  
David Granger  
Michael & Marcine Balk  
Michael E. Davis  
Michelle Enfield  
Mike Riela  
Molly Kohnstamm  
Nancy & Guy Jackson  
Nancy Closson  
Nandita Sampath  
Patricia T Bryant  
Paul Garrett  
Paul Hartge  
Perry Abbott  
Pete Phillips  
Phil Conte  
Philip Handwerk  
Ramon Kumar  
Rennie Chamberlain  
Revathi Ananthakrishnan  
Robert B. Adams  
Robin Gilbert  
Ross Wittenberg  
Rye High School  
Sal Cornetta  
Sarah S. Shreve  
Saree Kayne  
Shirley Schue  
Simran Kaur  
St. Alban's Episcopal  
Church  
St. Kilian's Congregation  
Stanley Rottell  
Steve Geller  
Steven & Rebecca Fretty  
Steven Frankel  
Susan Fondy  
Susan Hasti  
Susan Schulman  
Tahnee Birkeland  
Tara D. Gray  
Taylor Klemm  
Teresa Fraser  
The Dandley Fund  
Thomas &  
Margaret Caldwell  
Thomas & Colleen Hall  
Thuy Truong  
Travis & Veronica Lutz  
Trevor Bolls  
Uli Bilke  
Unitarian Universalist  
Congregation at  
Shelter Rock  
Virginia Nethery  
Walter Schlaepfer  
Wetlands Initiative  
Yok Potts

# DONORS Corporations and Foundations

## \$1,000,000+

REI Co-op  
Southern California Edison  
Thor Industries

## \$500,000 - \$999,999

Salt River Project  
The Vail Corporation

## \$100,000 - \$499,999

Aptiv Foundation  
Bonneville Environmental  
Foundation  
Boxed Water is Better, LLC  
Busch Beer  
Caudalie USA  
Ferrara Candy Company  
Hamill Family Foundation  
Meyer Memorial Trust  
Microsoft  
minuteKEY  
Patagonia Cerveza  
Polaris Industries, Inc.  
Rasmuson Foundation  
Starbucks  
Subaru of America, Inc.  
Telluray Foundation  
The Coca-Cola Company  
The Smart Family  
Foundation of Illinois

## \$50,000 - \$99,999

Anonymous  
Blount International, Inc.  
Cornelia Cogswell Rossi  
Foundation, Inc.  
ExxonMobil  
Filson  
Google, Inc.  
Harlan and Lois Anderson  
Family Foundation  
John Sperling Foundation  
Johnson Foundation  
of the Rockies  
Land Life Company  
Lands' End  
Ski Apache  
Smart Family Foundation  
of New York  
Snowbird Corporation  
Southwest Airlines and  
Southwest Airlines  
Foundation, an advised  
fund of the Silicon Valley  
Community Foundation

## \$25,000 - \$49,999

Alaska Airlines  
Arthur L. and Elaine V.  
Johnson Foundation  
B-K Lighting  
Copper Mountain Inc.  
Freshpet  
Hoffman Construction  
Planet Home Lending  
Santa Fe Natural  
Tobacco Company  
Science Care  
The Clara L.D. Jeffery  
Charitable Trust  
Trust for Mutual  
Understanding

## \$10,000 - \$24,999

Agentives Fund  
Allbirds  
Arizona Community  
Foundation of Yavapai  
County  
Arizona Snowbowl  
Armstrong World  
Industries  
Beyond GREEN  
Blooms Today  
Bluestone Life  
Insurance Company  
Brentwood Homes  
Bulgroup Properties  
Burgeon Beer  
Collins Cockrel & Cole  
ConocoPhillips Alaska  
E. & J. Gallo Winery  
Earth Day Network  
EcoTek Outdoors  
Ethos  
Fields Pond Foundation  
Fortune Brands  
Halliburton  
Hecla Charitable  
Foundation  
Horizons Foundation  
Jackson Hole Resort  
Lodging  
Krieger Charitable Trust  
Kuat Innovations LLC  
Lake Quinault Lodge  
Laura Jane Musser Fund  
Life Sprout Bioceuticals  
Logikcull  
Logitech  
Moccasin Lake Foundation  
Monarch Mountain  
Mt. Emmons Mining  
Company c/o Freeport  
McMoRan  
National Geographic  
Natura  
NOSON  
Ooni  
P. Joseph Development  
Corporation  
Pink Jeep Tours  
Purgatory Resort  
Reforest'ation  
Stryker's Sustainability  
Solutions  
Sun Valley Resort  
Telluride Ski & Golf  
Company  
The Dale Kutnick &  
Laura Gordon Kutnick  
Foundation, Inc.  
The Green Sunshine  
Company  
Thirteen Chefs  
Tredit Tire and Wheel  
Company  
U.S. Bank  
XTERRA Foundation

## \$5,000 - \$9,999

Arapahoe Basin Ski Area  
Brookstone Homes, LLC  
Buddha Teas  
Custom Coach and  
Limousine  
DuChateau  
Equinox Foundation  
at Inland Northwest  
Community Foundation  
Globe International  
GoReusable.Org  
(CatECO Ltd)  
Greenvelope  
Hood River Distillers  
J.W. & H.M. Goodman  
Family Foundation  
Kind Humans  
Marjorie Merriweather  
Post Foundation  
Mars Foundation  
McKinstry  
Microsoft Matching  
Gifts Program  
NitroFill  
Phipps Reporting, Inc.  
Pivotal Ventures  
Sevan Multi-Site Solutions  
SpartanNash  
Stave & Stone LLC  
Steans Family Foundation  
Tahoe Truckee Community  
Foundation  
Teton Waters Ranch LLC  
The Allyn Foundation, Inc.  
Tucson Electric  
UNICEF Kid Power  
UPLIFT Desk  
Viridian Reclaimed Wood  
Wall Street Greetings, LLC  
ZEAL Optics

## \$2,500 - \$4,999

A Living Tribute  
Bank of America  
Charitable Foundation  
Bank of Nova Scotia  
Bowery Capital  
Del Monte  
Ecolab  
Eleven  
Gourmesso  
Helix  
HJ Foundation  
Homes Bracelet LLC  
Hoptown Handles  
JuneShine  
Leon & George  
L'Oreal Travel Retail  
Americas  
Monterey Bay Mortgage  
Mt. Hood Meadows  
NetJets Services, Inc.  
New Belgium Brewing  
Nikko's Worldwide  
Chauffeured Services  
Plant Memorial Tree  
Public Radio Forest

Richie Graham  
Photography  
Robbins Brothers  
Sandler O'Neill + Partners  
Ski Santa Fe  
Solo New York  
Southwest Gas Foundation  
Spottswode Winery  
Starmark, A Trustmark  
Company  
The Charles Delmar  
Foundation  
The Moore Charitable  
Foundation  
Tiemann Investment  
Advisors, LLC  
TreeNewal LLC  
Wine By Joe, LLC  
Winter Park Resort

## \$1,000 - \$2,499

AJ Bidani, MD PA  
Amy's Ice Creams, Inc.  
Ayni Brigade  
Bear Wood Windows, Inc.  
Bearded Man Coffee  
Begonia & Bench  
Bonfire  
CarTots.com  
Continental Underwriters,  
Inc.  
Conway Scenic Railroad  
Crown Family  
Philanthropies  
Curriculum Research &  
Evaluation, Inc  
Eagle Rock Brewery  
EBSCO Mags  
FacilitySource, LLC  
Family Management  
Corporation  
Feetures! brand  
Gehan Homes, Ltd.  
Goldman Sachs Gives  
Gravy Live  
Green Earth Goodies  
Supplies  
Green Grove CBD  
Gunderson Dettmer  
Stough Villeneuve  
Franklin & Hachigian, LLP  
Harris Tea  
Harvest Partners Financial  
HE Travel  
HITT Contracting, Inc.  
Howard Johnson  
Foundation  
In The Box USA, Inc.  
Junto Bikes  
Kaiyo  
Kitchen Cabinet Depot  
L'ANZA Healing Haircare  
Liu Feng Shui, Inc.  
myDigitalOffice  
National Shooting Sports  
Foundation, Inc.  
NEXT List  
Patagonia  
Phillips International

Pine Needle  
Mountaineering  
Planning Center  
Raleigh Reclaimed LLC  
Rock Valley Credit Union  
Roundup Riders of the  
Rockies Heritage and  
Trails Foundation  
Scout Books  
Shade Metals  
SproutVideo  
St. George Appalachia  
Group  
Studio Ma  
SVA Certified Public  
Advisors, LLC  
The Bailey Foundation  
The Professionals Group  
Timberline Lodge  
Triadex Card Services  
TypeHaus, Inc.  
Vast Adventure  
Vawter Foundation  
Verdant Services  
Wild Tribute  
Window Fix, Inc.  
Yeti Coolers

## \$500 - \$999

aka Associates  
Aspen Brush Removal  
Beyond Balance  
Bluetree Network  
Breckenridge Grand  
Vacations  
City of New York  
Department of Education  
Daedal Earth Designs  
e-Cycle LLC  
Foxworth-Galbraith  
Lumber Company  
Freedom Mortgage  
KevLV Photography  
Lehn & Vogt Insurance  
Group  
Lippert Components  
Loon Mountain  
Movers Specialty Service  
(MSS)  
National Environmental  
Education Foundation  
Neuberger Berman LLC  
Osprey Packs Inc.  
Real World Scholars  
Skamania Lodge  
The Adam Miller Fund  
The Sam and Peggy  
Grossman Family  
Foundation  
Thingy Thing, LLC  
Vertex Pharmaceuticals  
WATERAX  
WoodZest

# NATIONAL FOREST FOUNDATION

## Board of Directors

**Chair**—Patricia Hayling Price  
*President, LiveWorkStrategize, LLC (NY)*

**Treasurer**—Lee Fromson  
*Executive Vice President, Products & Operations, Simms Fishing Products (MT)*

**Secretary**—Timothy P. Schieffelin  
*Founding Partner, Leeward Group (CT)*

## Executive Committee Members

Caroline Choi, *Senior Vice President, Regulatory Affairs, Southern California Edison (CA)*

Robert Cole, *Partner, Collins Cockrel & Cole, P.C. (CO)*

Rob Leary, *CEO, The Olayan Group (FL)*

## Board Members

Michael Barkin, *CFO, Vail Resorts Management Company (CO)*

Mike Brown, Jr., *Founder and Managing Partner, Bowery Capital (NY)*

Mary Kate Buckley, *President, Jackson Hole Mountain Resort (WY)*

Coleman Burke, *President, Waterfront Properties (NY)*

Aimée Christensen, *CEO, Christensen Global Strategies; Founding Executive Director, Sun Valley Institute (ID)*

Vicki Christiansen, *Ex-Officio, Chief, USDA Forest Service (DC)*

Bart Eberwein, *Executive Vice President, Hoffman Construction Company (OR)*

James K. Hunt, *Non-Executive Chairman, Tournament Capital Advisors, LLC, Hunt Companies, Inc. (WY)*

Allie Kline *(CO)*

Andie MacDowell, *Actress & Spokesperson (CA)*

Thomas McHenry, *President & Dean, Vermont Law School (VT)*

Kevin Murphy, *President, ExxonMobil Foundation; Manager, Corporate Citizenship and Community Investments, Exxon Mobil Corporation (TX)*

Jeff Paro *(NJ)*

Randy Peterson, *Principal, LRP Consultants, LLC (WI)*

Bob Wheeler, *President and CEO, Airstream Inc. (OH)*

Hugh Wiley, *Head of Media Commerce, XO Group—The Knot Worldwide (NY)*

## National Forest Leadership Council

**Chair**—Bernie Weingardt  
*U.S. Forest Service, Retired (CO)*

Doug Crandall  
*Director of Legislative Affairs, U.S. Forest Service (DC)*

Brian Ferebee  
*Regional Forester, Rocky Mountain Region, U.S. Forest Service (CO)*

Chris French  
*Deputy Chief, National Forest System, U.S. Forest Service (DC)*

Randy Moore  
*Regional Forester, Pacific Southwest Region, U.S. Forest Service (CA)*

Beth Pendleton  
*U.S. Forest Service, Retired (AK)*

*Staff, Board of Directors and National Forest Leadership Council lists current as of January, 2020.*







## National Forest Foundation

[nationalforests.org](http://nationalforests.org)  
Building 27, Suite 3  
Fort Missoula Road  
Missoula, MT 59804

### Staff

**President**—Mary Mitsos

**Executive Vice President**—Ray A. Foote

**Vice President, Field Programs**—  
Marcus Selig

Shereé Bombard *Director, Administration*

Zoe Bommarito *Communications Associate*

Colleen Coleman *Director, Marketing and  
Communications*

Darla Cotton *Executive Assistant*

Rebecca Davidson *Director, Southern  
Rockies Region*

Sarah Di Vitorrio *California Program Manager*

Karen DiBari *Director, Conservation Connect*

Hannah Featherman *Communications  
Manager*

Dania Gutierrez *California Program  
Manager—Southern California*

Robin Hill *Controller*

Britt Holewinski *Tree Planting Associate*

Ben Irely *Conservation Connect Program  
Manager*

Beth Krueger *Grants and Contracts  
Coordinator*

Adam Liljebblad *Director, Conservation Awards*

Hunter Maggs *Accountant*

Jessica McCutcheon *Digital Marketing  
Manager*

Matt Millar *California Program Manager—  
Tahoe*

### NFF Offices

- Missoula, Montana
- Asheville, North Carolina
- Boise, Idaho
- Denver, Colorado
- Flagstaff, Arizona
- Los Angeles, California
- Phoenix, Arizona
- Portland, Oregon
- Salida, Colorado
- Seattle, Washington
- South Lake Tahoe, California

Kerry Morse *Conservation Programs Officer*

Luba Mullen *Associate Director, Development*

Katie Neher *Development Database  
Associate*

Emily Olsen *Colorado Program Manager*

Marlee Ostheimer *Conservation  
Partnerships Manager*

Monica Perez-Watkins *Tree Planting  
Coordinator*

Spencer Plumb *Conservation Finance  
Program Manager*

Evan Ritzinger *California Program  
Coordinator—Tahoe*

Brian Robey *California Program  
Associate—Southern California*

Patrick Shannon *Director, Pacific  
Northwest Program*

Katrina Angelina Shull *Event Planner and  
Coordinator*

Dani Southard *Northern Rockies  
Program Manager*

Mark Shelley *Director, Eastern Region*

Wes Swaffar *Director, Reforestation  
and Partnerships*

Briana Tiffany *California Program  
Associate—Tahoe*

Dayle Wallien *Director, Conservation  
Partnerships*

Leah Zamesnik *Partnership Coordinator*